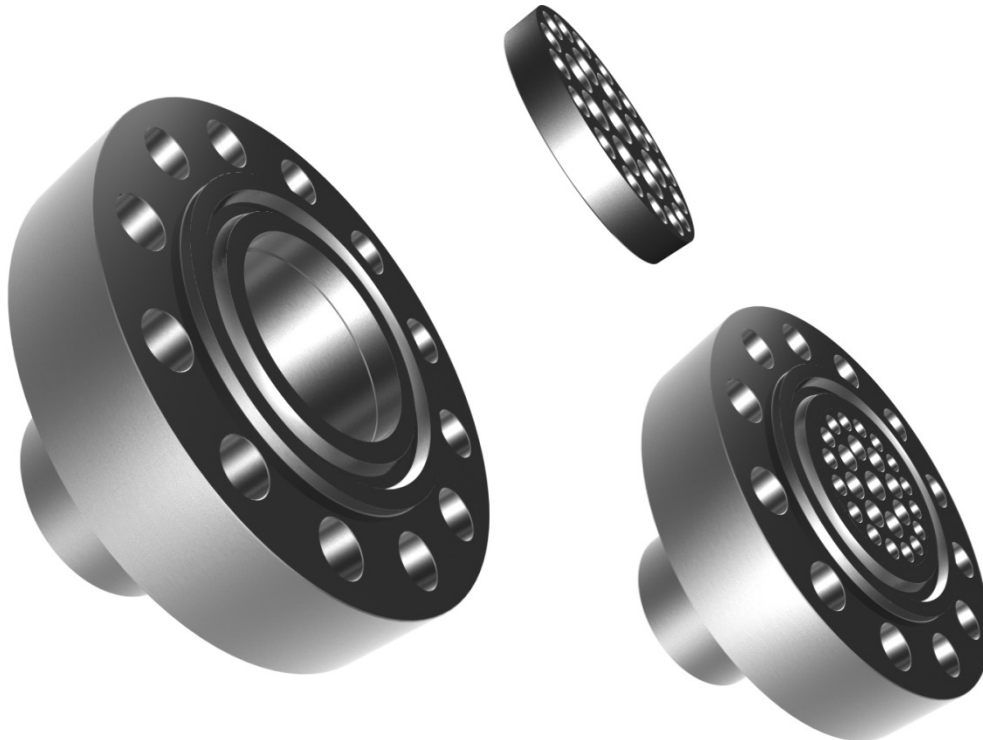


**CANADA
PIPELINE
ACCESSORIES**

CPA 50E RTJ Insert Flow Conditioner



Quick Specifications

- A cost effective Ring Type Joint (RTJ) Flow Conditioner, applicable to high pressure RTJ Orifice, Ultrasonic, Vortex and Turbine Metering.
- Installs inside the existing RTJ flange with minimal flange preparation (eg. Machining).
- One less joint than the full RTJ Flow Conditioner Design.
- Uses set screws to prevent Flow Conditioner rotation due to swirl stress.

Please contact us for more details

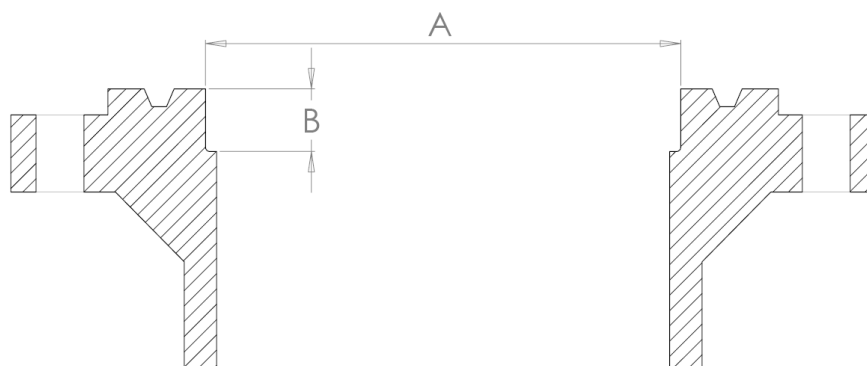
1 888 349 3569 North America

001 403 236 4480 All other countries



CANADA PIPELINE ACCESSORIES

CPA 50E RTJ Insert Flow Conditioner



NPS	Schedule	Pipe ID (Inches)	A* (Inches)	B (Inches)
3	80	2.900	3.275	0.435
3	160	2.626	3.001	0.394
4	80	3.826	4.201	0.574
4	120	3.626	4.001	0.544
4	160	3.438	3.813	0.516
6	80	5.761	6.136	0.864
6	120	5.501	5.876	0.825
6	160	5.189	5.564	0.778
8	80	7.625	8.000	1.144
8	120	7.189	7.564	1.078
8	160	6.813	7.188	1.022
10	80	9.564	9.939	1.435
10	120	9.064	9.439	1.360
10	160	8.500	8.875	1.275
12	80	11.376	11.751	1.706
12	120	10.750	11.125	1.613
12	160	10.126	10.501	1.519
16	80	14.314	14.689	2.147
16	120	13.564	13.939	2.035
16	160	12.814	13.189	1.922

*This represents the maximum possible diameter of the RTJ insert style CPA 50E.

Please note that the RTJ flange will require a counter bore to be machined into it to accept the CPA 50E Flow Conditioner – dimensions are available from Canada Pipeline Accessories Co. Ltd. It is the customer's responsibility to have this counter bore machined into the flange and to ensure that the flanges are suitable to use in this application and compliant with applicable pressure containing equipment standards. This modification may void compliance with pressure containing standards.