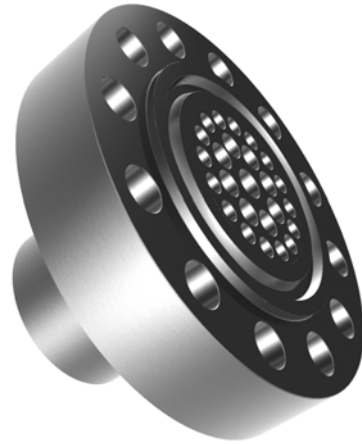




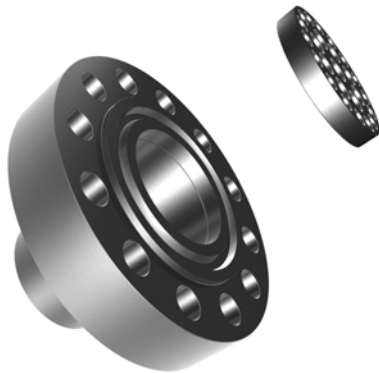
**CANADA
PIPELINE
ACCESSORIES**

CPA 50E RTJ INSERT

**FLOW CONDITIONER
(PROFILER)**



Quick Specifications



- *A Cost effective Ring Type Joint (RTJ) Flow Conditioner, applicable to high pressure RTJ Orifice, Ultrasonic, Vortex and Turbine Metering*
- *Installs inside the existing RTJ flange with minimal flange preparation - machining*
- *One less joint than full RTJ Flow Conditioner Design*

Compare this to the competition!

**Contact us for Details
1 888 349 3569 North America
001 403 236 4480 All other countries**

www.flowconditioner.com